

Page 1 (of 4 Pages)
 1. Complete body measurements with those on the pattern envelope. Make alterations if necessary before you cut.
 2. Test fabric for reaction to heat and moisture, using steam iron. Straighten ends when needed.
 3. Choose cutting layout for Version, width of fabric and size.
 For fabric with nap, shading or one-way design, use "With Nap" layout.
 4. Prepare fabric for cutting as indicated on "Layouts".
 For double thickness, fold fabric right sides together.
 For single thickness, place fabric right side up.
 For pattern pieces to be placed on fold, fabric must be folded on lengthwise or crosswise grain.
PATTERN PIECES SHOWN IN THE LAYOUTS ARE TO BE PLACED PRINTED SIDE DOWN
 5. Pin pattern to fabric with grainline markings parallel to selvage. Cut on cutting lines.
 6. Transfer all construction lines and symbols to fabric or underlining when used.
 A 5/8" (15 mm) SEAM ALLOWANCE GIVEN ON ALL VOGUE PATTERNS UNLESS OTHERWISE INDICATED.

PATTERN MARKINGS

SCISSORS indicate exact CUTTING LINE.
PRESSER FOOT indicates exact STITCHING LINE.
MATCH NOTCHES with corresponding numbers.
MATCH LARGE ●'s, **SMALL** ○'s, ■'s, ▲'s, accurately.
ADJUSTMENT LINE indicates where to lengthen or shorten pattern.
Sketch indicates exact length of BUTTONHOLE and exact size of **BUTTON**.

LAYOUT PIECE REQUIREMENTS

COAT A
 Use pieces 1, 2, 3, 4, 5, 6 and 7 (For Quilted Fabric)
 Use pieces 1, 2, 3, 4, 5, 6, 8 and 9 (COAT AND BELT B)
 Use pieces 1, 2, 3, 4, 5, 6, 7 and 10 (COAT LINGING B)
COAT AND BELT C
 Use pieces 1, 2, 3, 4, 5, 6, 7 and 9 (For Flat Fur-Like Fabric)
 Use pieces 1, 2, 3, 4, 5, 6, 7 and 10 (COAT LINGING C)
COAT D
 Use pieces 1, 2, 3, 4, 5, 6 and 8 (For Flat Fur-Like Fabric)
 Use pieces 1, 2, 3, 4, 5, 6 and 9 (COAT LINGING D)
COAT AND BELT E
 Use pieces 1, 2, 3, 4, 5, 6, 7 and 10 (COAT LINGING E)
 Use pieces 1, 2, 3, 4, 5, 6, 7 and 11 (LINING E)
 Use pieces 1, 2, 3, 4, 5, 6, 8 and 9 (LINING E)

PATTERN PIECE IDENTIFICATION

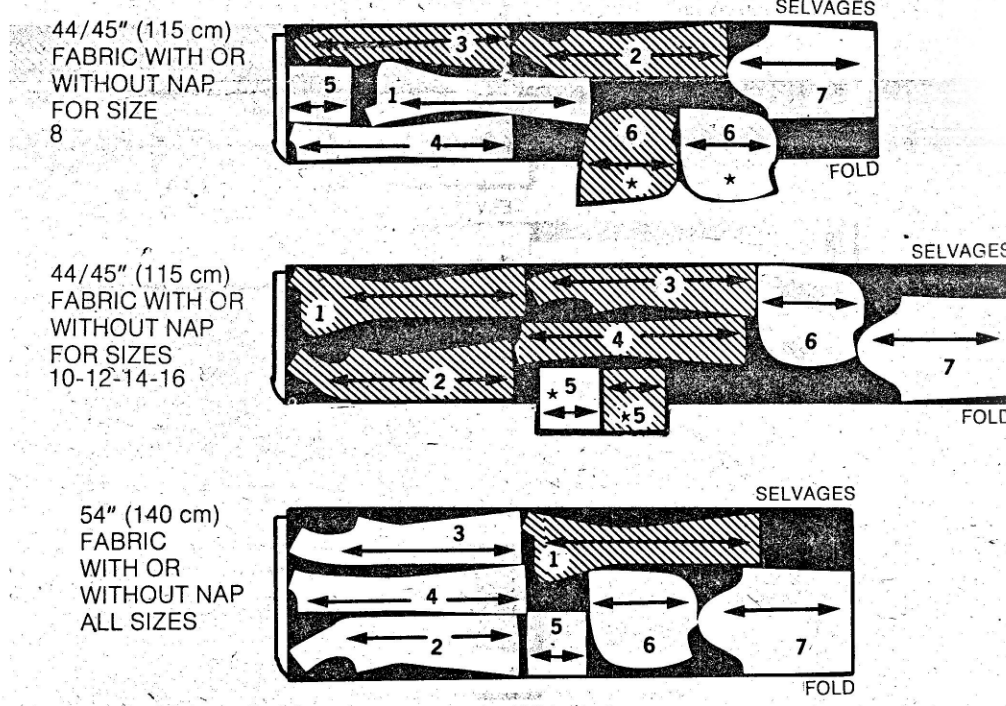
COAT
 1. Front
 2. Side Front
 3. Back
 4. Back
 5. Pocket
 6. Hood A, B and C
 7. Sleeve
 8. Sleeve
 9. Sleeve Lining
 10. Belt B, C and E
 11. Under Collar D, E
 12. Upper Collar D, E

SPECIAL INSTRUCTIONS

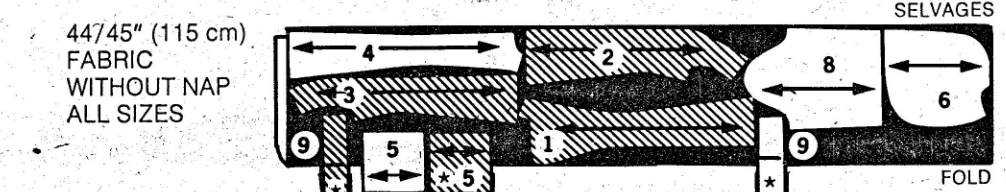
PLEASE NOTE: The abbreviations "cm" and "mm" give the metric measurement equivalent. These are provided for those countries using the metric system.
 ★ Open fabric right side up and cut one.
 Any perforations on pattern lines are to be disregarded. Press tissue with warm dry iron to remove wrinkles.

CUTTING GUIDE

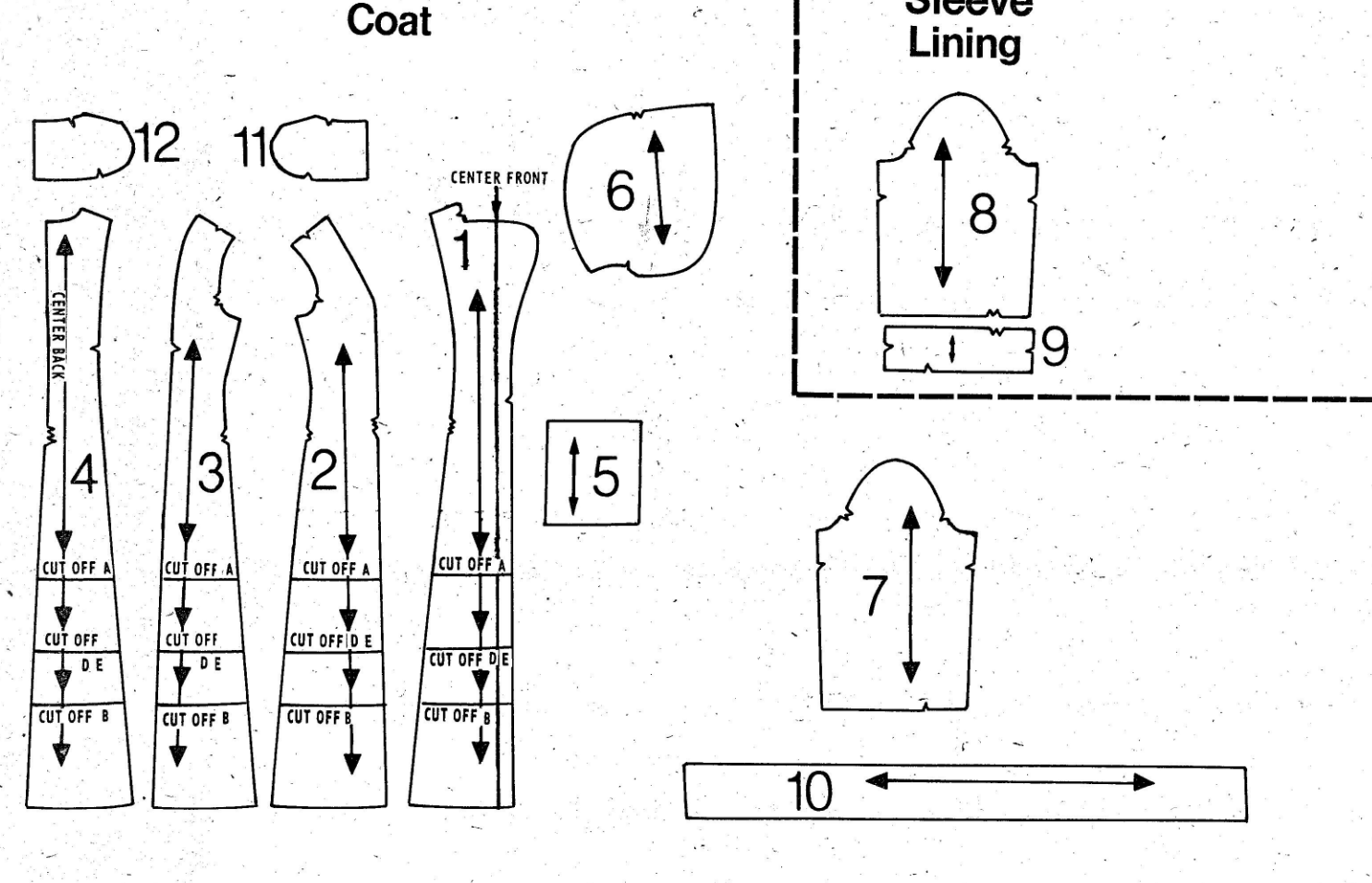
Coat A



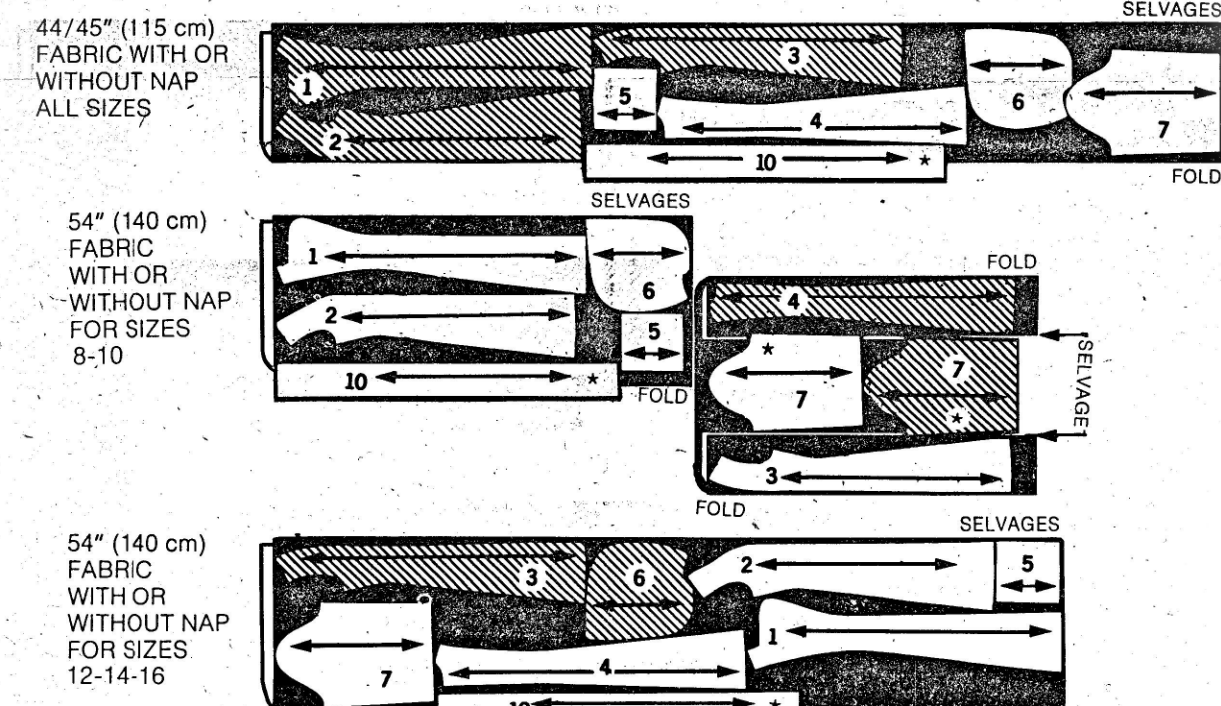
Lining A (For Quilted Fabrics)



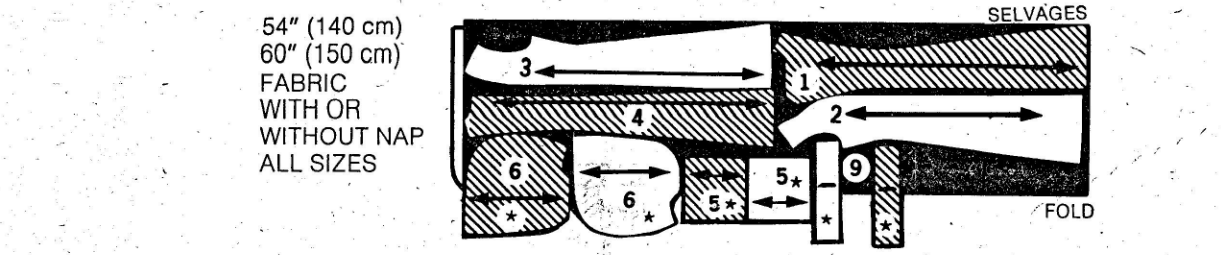
PATTERN PIECES



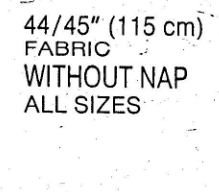
Coat and Belt B



Coat Lining B (For Flat Fur-Like Fabrics)

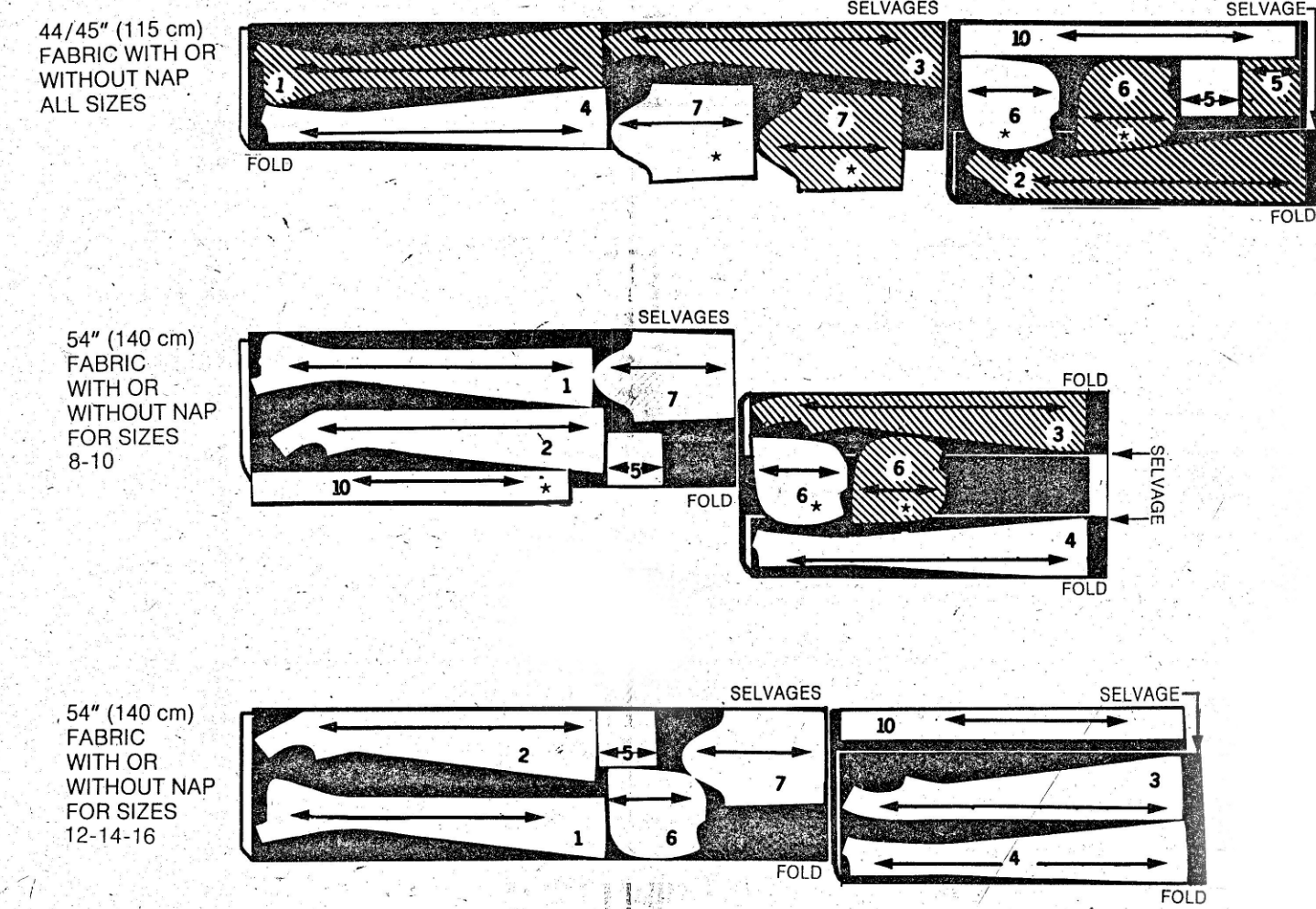


Sleeve Lining B (Use Quilted Fabric Only)

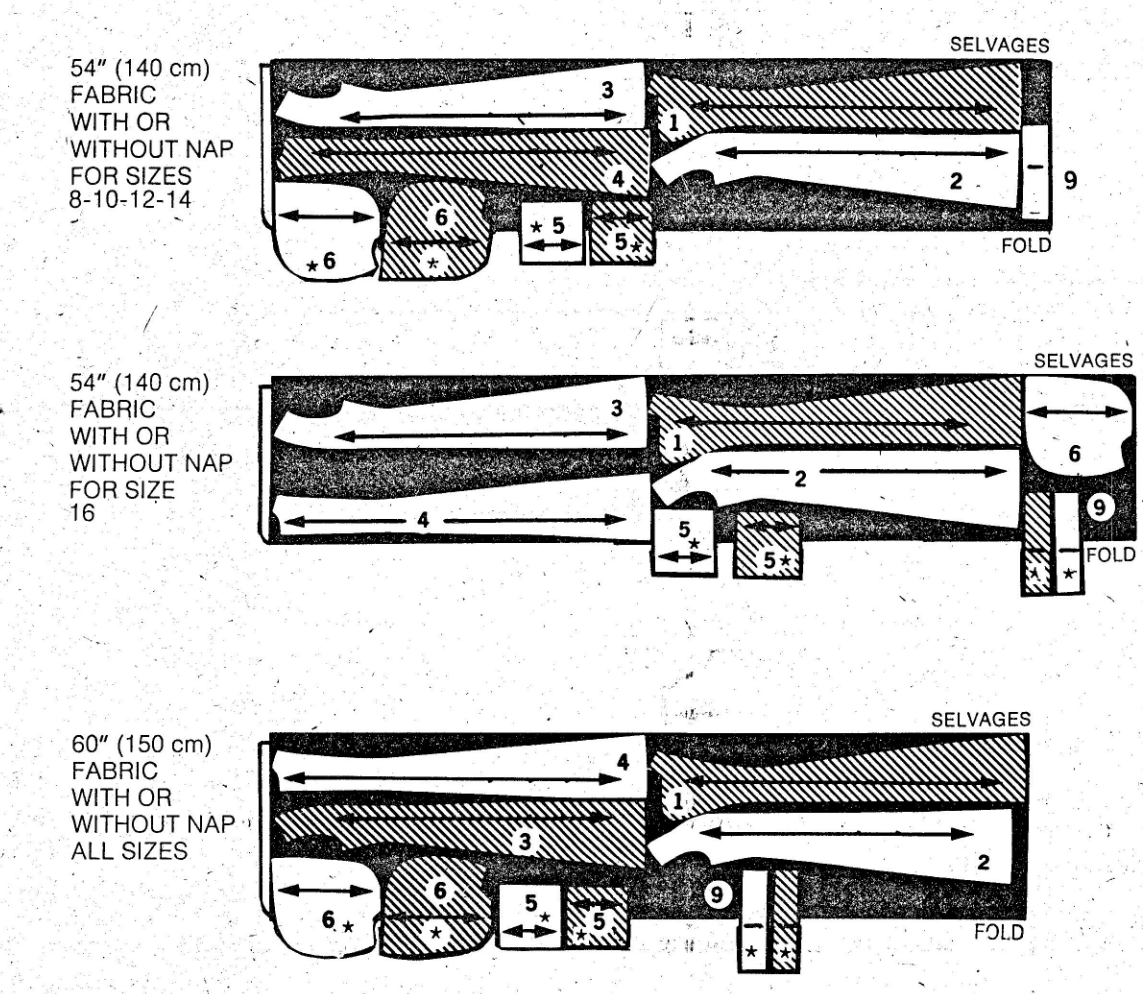


(CONTINUED)

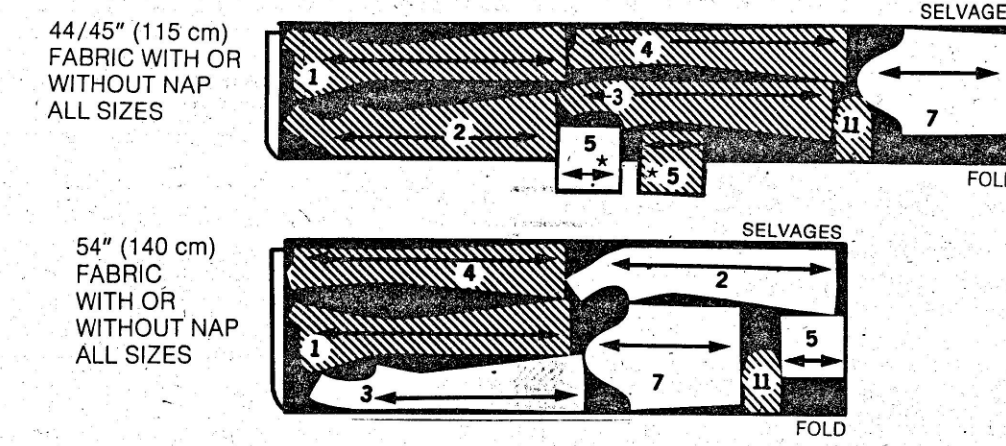
Coat and Belt C



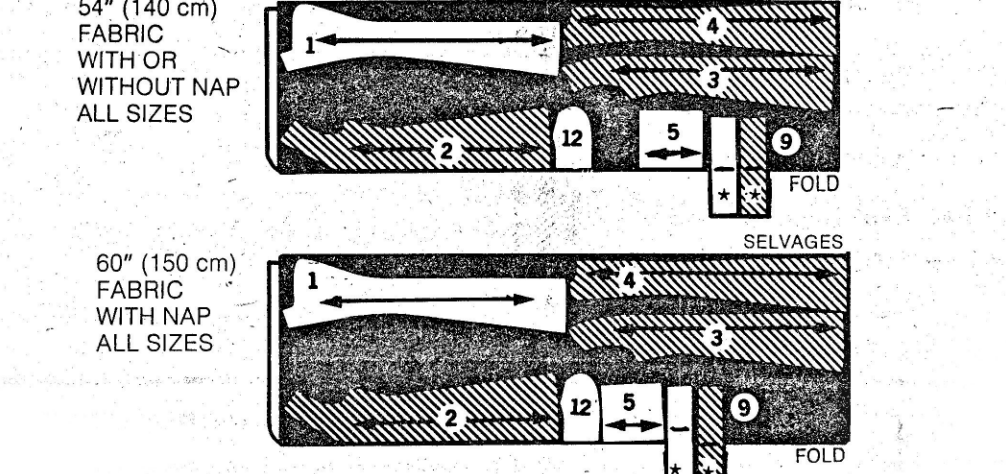
Coat Lining C (For Flat Fur-Like Fabrics)



Coat D



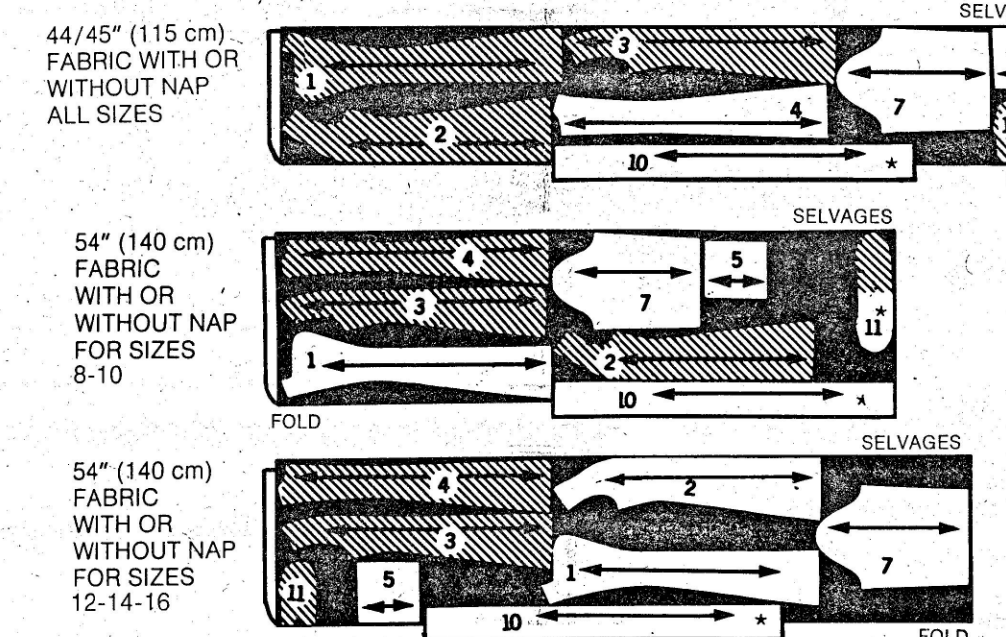
Coat Lining D (For Flat Fur-Like Fabrics)



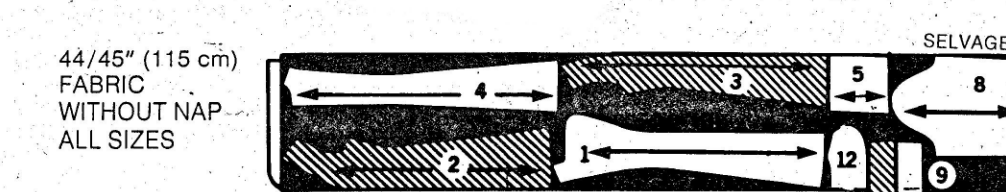
Sleeve Lining C or D (Use Quilted Fabric Only)



Coat and Belt E



Lining E (For Quilted Fabric)



SEWING GUIDE	FABRIC ILLUSTRATION KEY	Important!	STITCH	TRIM	PRESS
1114 Page 3 (of 4 Pages)	Right side of fabric Wrong side of fabric Underlining Interfacing	Mark Center Front and Center Back with busting threads. Match Symbols and Notches accurately. Baste with pins or thread. Try on. Fit before you stitch.	Stitch along Seamlines and Stitching Lines accurately. Stitch dart, tapering to single small ●, as shown.	Trim notched seams into layers. Trim corners. Clip inner curves. Match outer curve.	Press as You Sew. Press all seams open unless otherwise indicated, clipping where necessary so seams will lie flat. Press pleats and straight seams on Flat Surface. Press darts and curved seams over Rounded Surface.

PLEASE NOTE: The abbreviations "cm" and "mm" give the metric measurement equivalent. These are provided for those countries using the metric system.

Coat A

- NOTE: Press all seams open unless otherwise indicated.
- Reinforce FRONT 1 inner corner, pivoting at small ●. To reinforce, stitch along seamline, using small stitches. Clip to small ●.
- Stitch FRONT 1 to SIDE FRONT 2. Trim front seam allowance to 1/4" (6mm). Press seam toward front.
- Stitch SIDE BACK 3 to BACK 4. Trim back seam allowance to 1/4" (6mm). Press seam toward back.
- Topstitch front and back along topstitching lines.
- Stitch center back seam.
- Stitch back to front at shoulders and sides.

Lining and Finishing A

- Make same as Coat, Steps 1 and 2.
- Stitch front LINING 1 to side front LINING 2.
- Stitch side back LINING 3 to back LINING 4.
- Continue same as Coat, Steps 6, 7, 12 and 13.

Coat B or C

- Make same as Coat A, Steps 1 through 11.
- Turn up coat and lining hems. Baste close to folds separately. Blindstitch raw edge of coat in place. Press.
- Slipstitch lining to coat 1/2" (13mm) from basted edges, as shown.
- With right sides together, stitch sleeve lining to sleeve at lower edge. Trim.
- Turn lining to inside; press seam. Pin basted edge over armhole seam, placing large ● at shoulder seam. Adjust ease, distributing evenly; slipstitch.
- Make hand or machine buttonholes in right front at markings.
- Sew buttons to left front at markings.

Lining and Finishing B or C

- Make same as Coat A, Steps 1 and 2.
- Continue same as Lining and Finishing A, Steps 2 and 3.
- Continue same as Coat A, Steps 6, 7, 12 and 13.
- Continue same as Lining and Finishing A, Steps 5 through 14.
- Fold BELT 10; stitch leaving an opening. Trim to 1/4" (6mm).
- Turn. Press. Slipstitch opening.

Coat D

- Make same as Coat A, Steps 1 through 11.
- Staystitch neck edge. To staystitch, stitch 1/8" (3mm) from seamline in seam allowance.
- Pin UNDER COLLAR 11 to coat neck edge, placing small ●'s at shoulder seams, clipping coat where necessary. Baste. Stitch between large ●'s, pivoting at small ●'s. Trim.
- Continue same as Coat A, Steps 14 through 16.

Lining and Finishing D

- Make same as Coat A, Steps 1 and 2.
- Continue same as Lining and Finishing A, Steps 2 and 3.
- Continue same as Coat A, Steps 6 and 7.

Coat E

- Make same as Coat A, Steps 1 through 11.
- Continue same as Coat D, Steps 2 and 3.
- Continue same as Coat A, Steps 14 through 16.

Lining and Finishing E

- Make same as Coat A, Steps 1 and 2.
- Continue same as Lining and Finishing A, Steps 2 and 3.
- Continue same as Coat A, Steps 6 and 7.
- Continue same as Coat D, Steps 2 and 3 substituting UPPER COLLAR 12 for UNDER COLLAR 11.
- Continue same as Lining and Finishing D, Step 6.
- Continue same as Lining and Finishing A, Steps 7 through 14.
- Continue same as Lining and Finishing B or C, Steps 5 through 7.
- Complete same as Lining and Finishing A, Steps 17 and 18.

SEWING GUIDE	FABRIC ILLUSTRATION KEY	Important!	STITCH	TRIM	PRESS
1114 Page 3 (of 4 Pages)	Right side of fabric Wrong side of fabric Underlining Interfacing	Mark Center Front and Center Back with busting threads. Match Symbols and Notches accurately. Baste with pins or thread. Try on. Fit before you stitch.	Stitch along Seamlines and Stitching Lines accurately. Stitch dart, tapering to single small ●, as shown.	Trim notched seams into layers. Trim corners. Clip inner curves. Match outer curve.	Press as You Sew. Press all seams open unless otherwise indicated, clipping where necessary so seams will lie flat. Press pleats and straight seams on Flat Surface. Press darts and curved seams over Rounded Surface.

PLEASE NOTE: The abbreviations "cm" and "mm" give the metric measurement equivalent. These are provided for those countries using the metric system.

Lining and Finishing A

- Stitch seam in SLEEVE LINING 9.
- Stitch sleeve lining 9 to lower edge of sleeve lining 8.

Coat B or C

- Make same as Coat A, Steps 1 through 16.

Lining and Finishing B or C

- Make same as Coat A, Steps 1 and 2.
- Continue same as Lining and Finishing A, Steps 2 and 3.
- Continue same as Coat A, Steps 6, 7, 12 and 13.
- Continue same as Lining and Finishing A, Steps 5 through 14.
- Fold BELT 10; stitch leaving an opening. Trim to 1/4" (6mm).
- Turn. Press. Slipstitch opening.

Coat D

- Make same as Coat A, Steps 1 through 11.
- Staystitch neck edge. To staystitch, stitch 1/8" (3mm) from seamline in seam allowance.
- Pin UNDER COLLAR 11 to coat neck edge, placing small ●'s at shoulder seams, clipping coat where necessary. Baste. Stitch between large ●'s, pivoting at small ●'s. Trim.
- Continue same as Coat A, Steps 14 through 16.

Lining and Finishing D

- Make same as Coat A, Steps 1 and 2.
- Continue same as Lining and Finishing A, Steps 2 and 3.
- Continue same as Coat A, Steps 6 and 7.

Coat E

- Make same as Coat A, Steps 1 through 11.
- Continue same as Coat D, Steps 2 and 3.
- Continue same as Coat A, Steps 14 through 16.

Lining and Finishing E

- Make same as Coat A, Steps 1 and 2.
- Continue same as Lining and Finishing A, Steps 2 and 3.
- Continue same as Coat A, Steps 6 and 7.
- Continue same as Coat D, Steps 2 and 3 substituting UPPER COLLAR 12 for UNDER COLLAR 11.
- Continue same as Lining and Finishing D, Step 6.
- Continue same as Lining and Finishing A, Steps 7 through 14.
- Continue same as Lining and Finishing B or C, Steps 5 through 7.
- Complete same as Lining and Finishing A, Steps 17 and 18.